

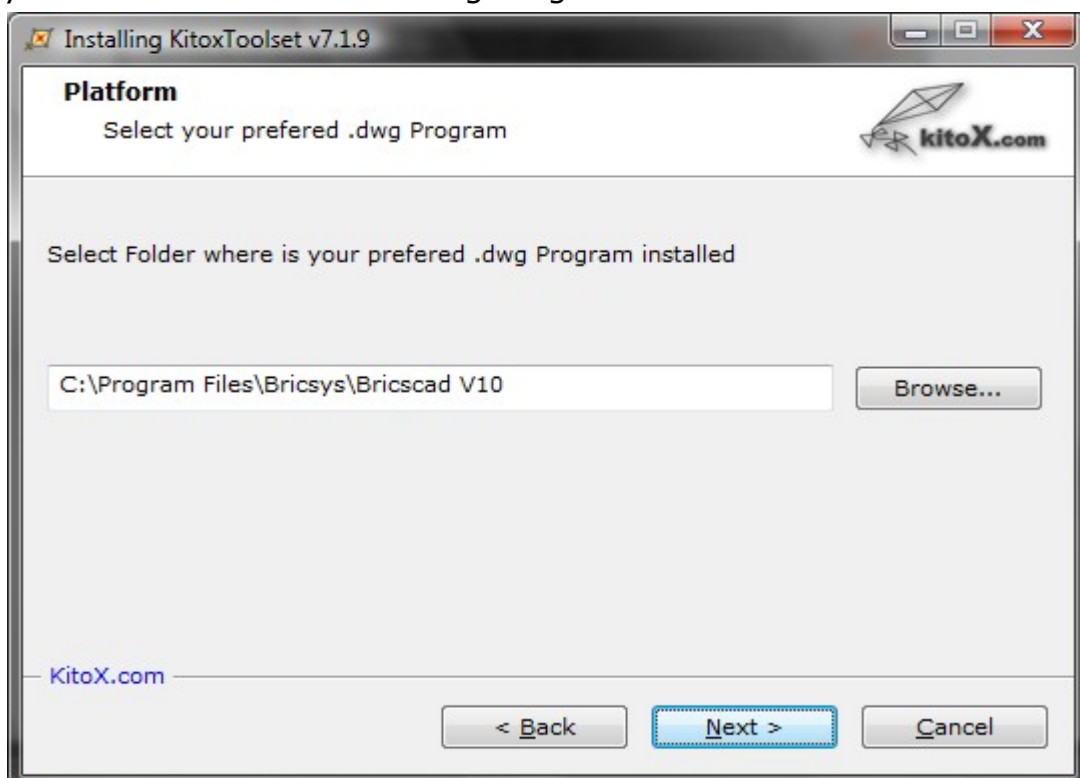
KitoX.com Application Setup guide

This is Setup guide for CAD applications from kitox.com. KitoxToolset setup is used as example below. *KitoxApplication* means the application name to install.

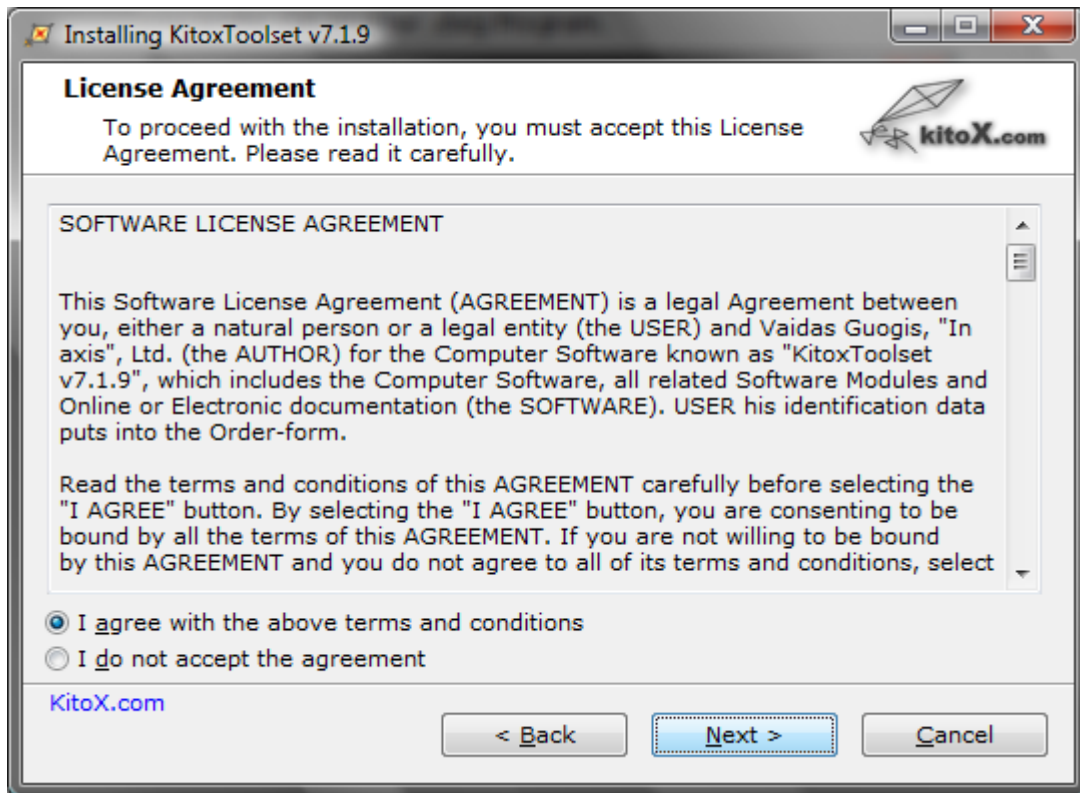
1. Extract *KitoxApplication.zip* archive and run *KitoxApplication.exe* file (click Allow if asked by Vista or Windows 7)
2. Welcome dialog



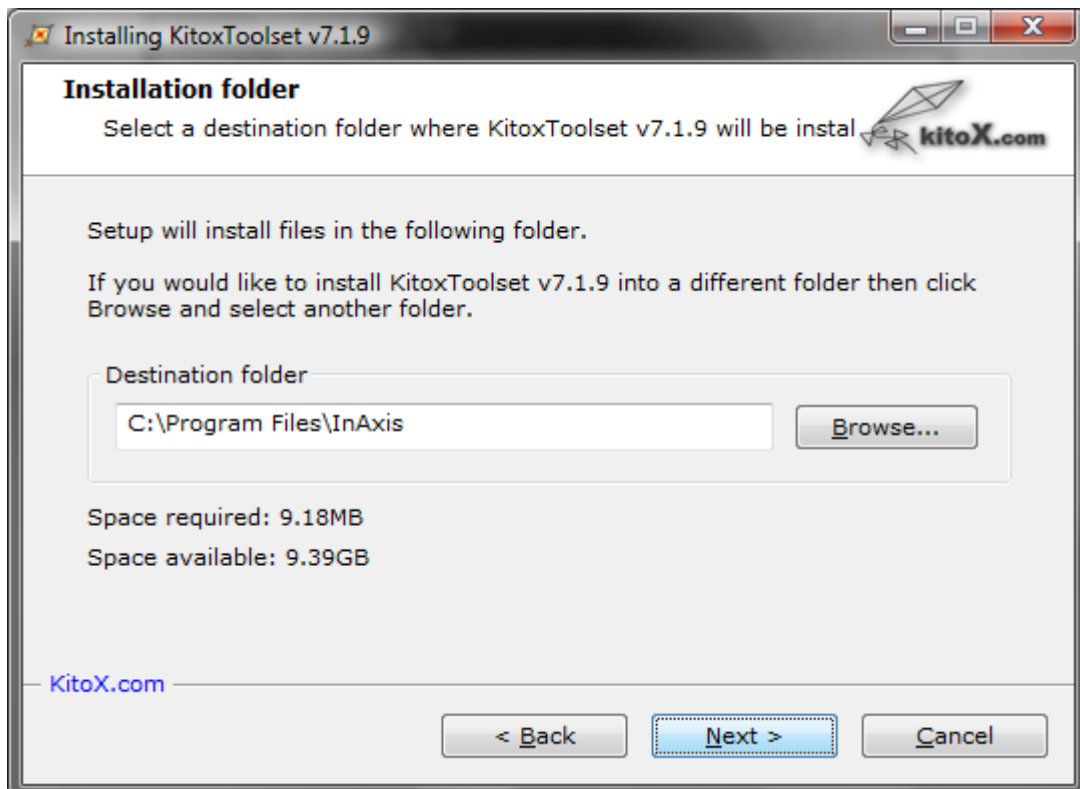
3. Setup detects installed .dwg Program automatically. Click Browse... if you want to run another .dwg Program for Installation.



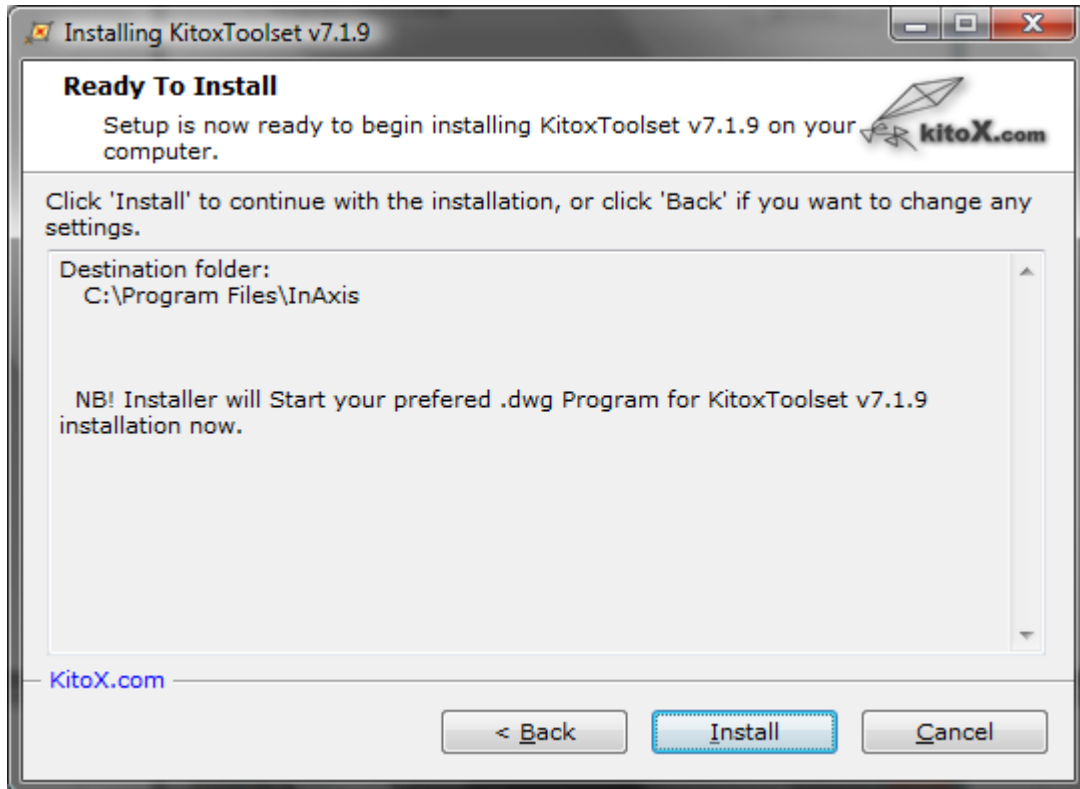
4. License Agreement dialog



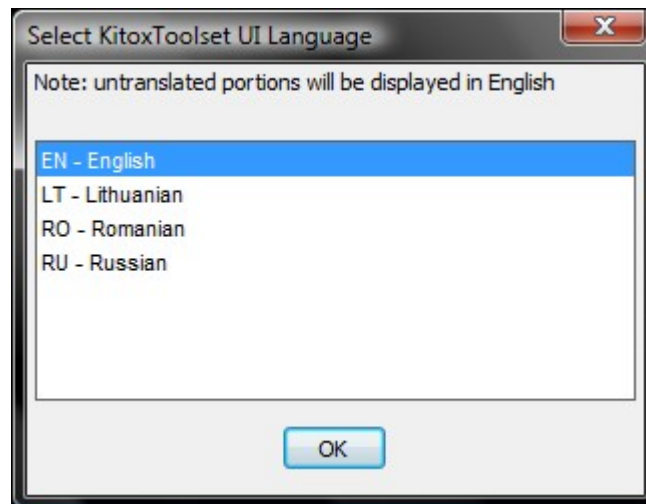
5. KitoxApplication Installation folder.



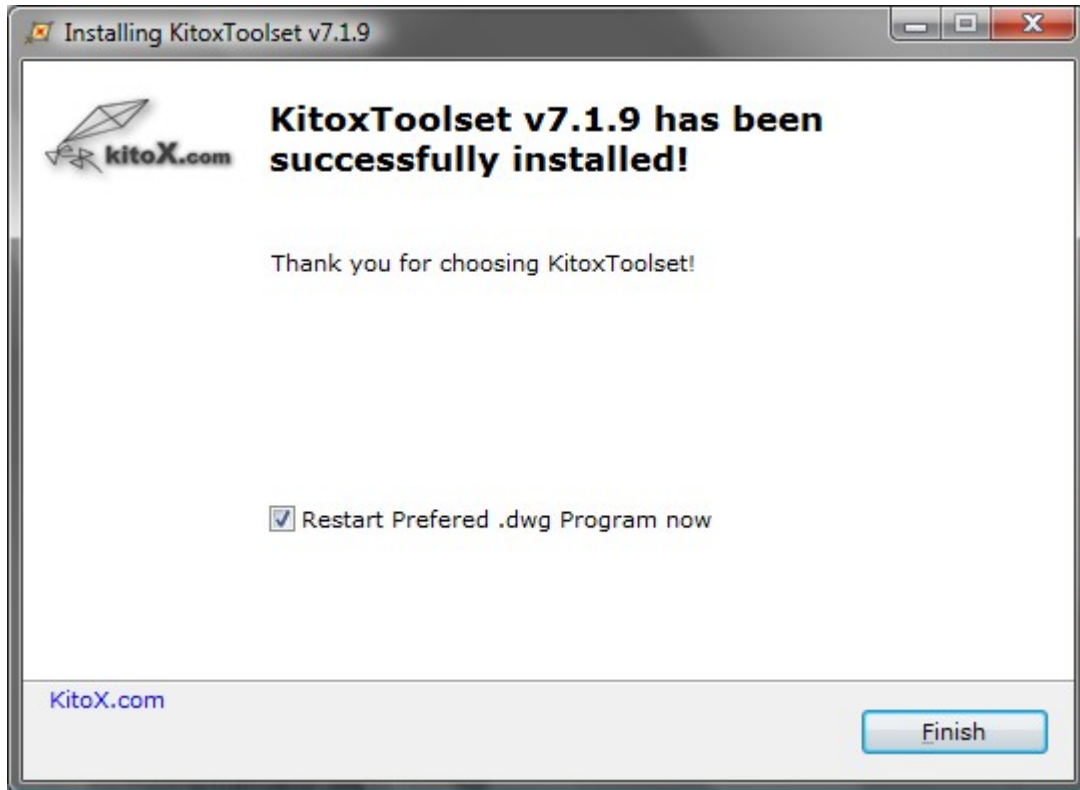
6. Ready to Install dialog. Installer will start preferred .dwg Program for menu loading automatically.



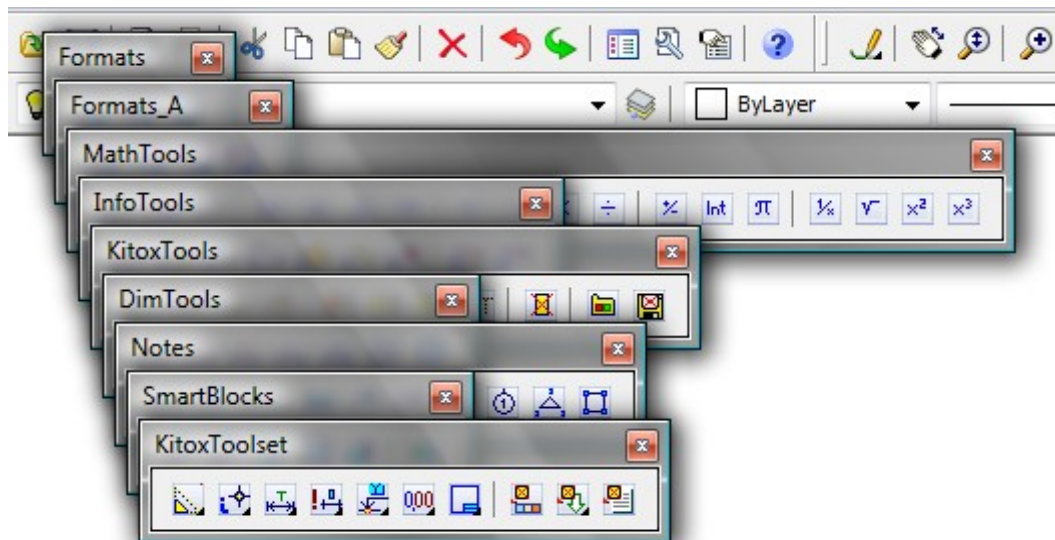
7. .dwg Program started, User Interface Language selection dialog.



8. Finish and Restart .dwg Program dialog. Uncheck if you want reload .dwg Program later.



9. Program restarted and *KitoxApplication* menu loaded.

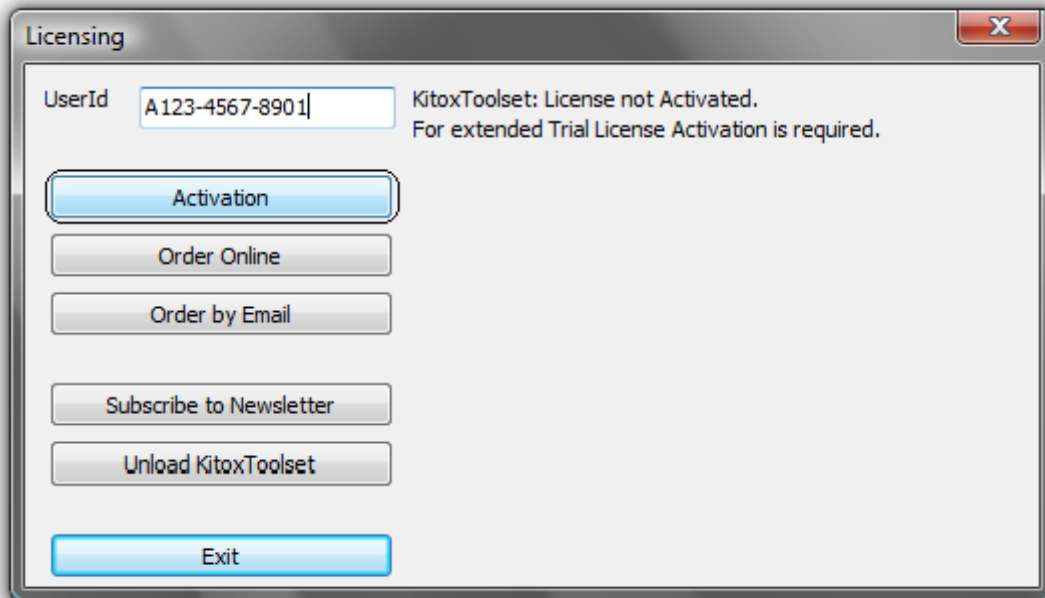


10. If you have setup problems, please contact support@kitox.com

11. For a Free Evaluation License please click Licensing button



and send us Activation email. Trial License key will be sent to you by email.



12. To order *KitoxApplication* License online click Order Online button (see pt.11). Your Internet Browser will be redirected to Online e-store. Available payment methods are payment by Credit Card, Wire transfer, PayPal, Check. Choose Full package or Modules you need and Licensing Period in e-store. Note, after filling-out Order form you will be asked for *KitoxApplication* UserId (eg. A123-4567-8901 in dialog above). Just paste it into required field using Paste or Ctrl+V, because your UserId is already copied to Clipboard.

13. To order *KitoxApplication* License by email click Order by Email button (see pt.11). Choose Full package or Modules you need and Licensing Period in dialog box and fill-in your Personal data for Proforma invoice. Your Email program will started automatically. If you prefer to send Order from web-mail, please uncheck "Start Email Program" checkbox and copy Order data from opened file into your web-mail. Proforma invoice for Wire transfer will be sent to you by email from Local Reseller (if exists) or from us directly.

14. To unload *KitoxApplication* menu, click Licensing button (see pt.11) and press Unload *KitoxApplication* button.

Thank you for choosing CAD tools from kitox.com!